

FCSA's purpose is to handicap sailboats (PHRF), make up the annual schedule, sponsor the Interclub Regatta, organize Wednesday Beer Can Races, and hold an Awards and General Meeting in January. FCSA's Board of Directors is made up of one volunteer from each club. See a club handicapper to get a PHRF rating. New rating \$35, Renew by Feb. 1st \$30, Change rating \$5.

The fleet handicappers are one volunteer from each club and a volunteer Chief Handicapper. All requests for ratings are completed by a club handicapper and approved by the Chief Handicapper. All rating protests are submitted to the Chief Handicapper and voted on by club handicappers.



North Courses

- 1 to 3 1.1 nm
- 1 to 5 2.8 nm
- 1 to 7 4.6 nm
- 1 to 9 5.6 nm

- 3 to 5 1.8 nm
- 3 to 7 3.6 nm
- 3 to 9 4.5 nm

- 5 to 7 1.7 nm
- 5 to 9 2.9 nm

- 7 to 9 1.1 nm

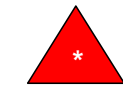
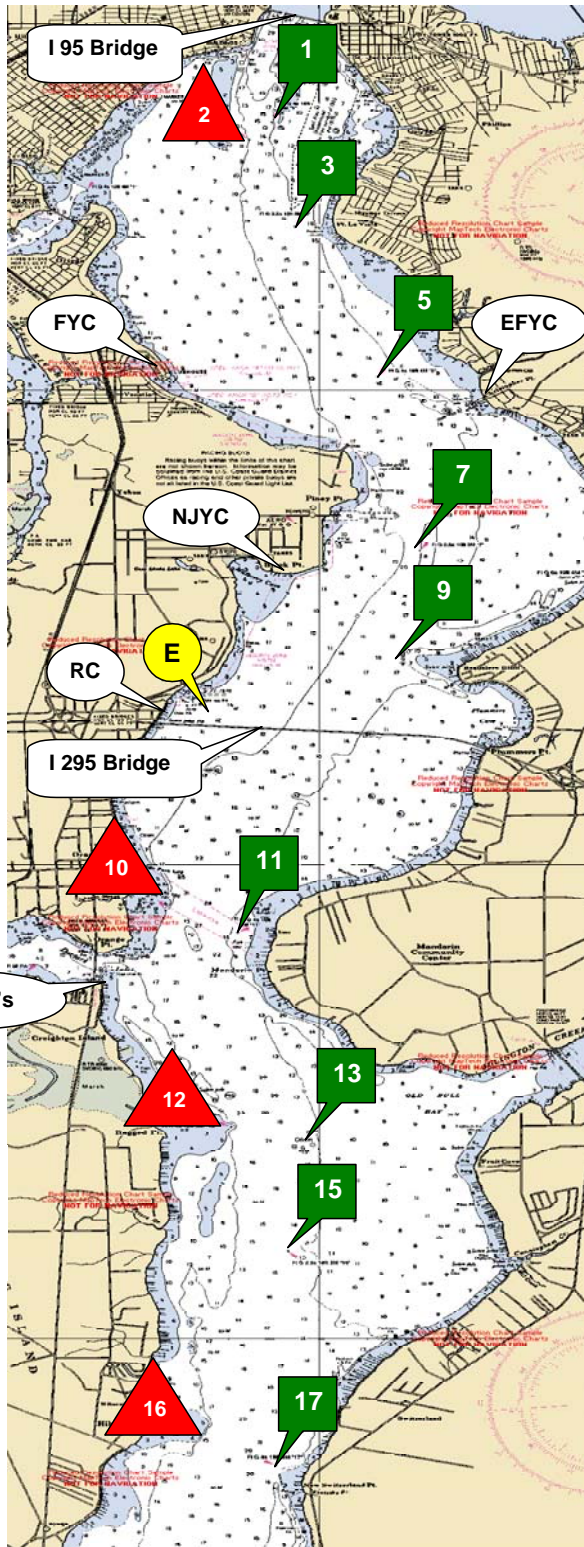
- E to 7 2.3 nm
- E to 9 1.5 nm

South Courses

- 11 to 13 2.3 nm
- 11 to 15 3.4 nm
- 11 to 17 5.6 nm

- 13 to 15 1.1 nm
- 13 to 17 3.4 nm

- 15 to 17 2.3 nm



*Marks 2, 10, 12, 16 are well placed. Do not sail out of channel without local knowledge.

River Mark G1
N30° 17.798'
W081° 40.440'

River Mark G3
N30° 16.723'
W081° 40.219'

River Mark G5
N30° 15.013'
W081° 39.470'

River Mark G7
N30° 13.312'
W081° 39.078'

River Mark G9
N30° 12.272'
W081° 39.241'

FCSA Mark "E"
N30° 11.700'
W081° 40.900'

River Mark G11
N30° 09.286'
W081° 40.728'

River Mark G13
N30° 07.030'
W081° 40.223'

River Mark G15
N30° 05.911'
W081° 40.276'

River Mark G17
N30° 03.655'
W081° 40.393'

FCSA offers three series of PHRF races: the Spring Series Trophy, the Fall Series Trophy, and the Offshore Trophy. When a rated sailboat is entered in a club race, noted as a FCSA points race, the boat is competing for a club trophy for that race and points toward the annual trophy for the series.

Rules for the annual trophies:

Spring and Fall Series Trophies:
6 races each, 1 throw out race.

Offshore Series:
5 races, 1 throw out race.

Note: There will be no throw out races in a series if less than four races are held due to cancellation of races in that series.

Race scoring will be the low point system, 2005-2008 Racing Rules of Sailing, Appendix A, Rule A4.

Series scoring will be as follows:

DNF = number that started the race
DNS, RAF = number that entered race
DSQ = 1 + number that entered race
DNE = 1 + number entered in the series

Trophies divided by Spinnaker, Non-Spinnaker, and Cruiser classes. All competitors must have a current PHRF rating and be a member of a club.

Host: (Check FCSA Website www.sailjax.com for contacts, addresses, phone numbers for club representatives)

- EFYC - Epping Forest Yacht Club www.efyc.com
- FYC - Florida Yacht Club www.thefloridayachtclub.org
- NJYC - Navy Jax Yacht Club www.njyc.org
- RC - Rudder Club www.rudderclub.com

- FCSA - First Coast Sailing Association www.sailjax.com
- NFCC - North Florida Cruising Club www.nfccsail.com
- NFWSN - Northeast Florida Women's Sailing Network
- SAYC - St Augustine Yacht Club www.sayc2000.com